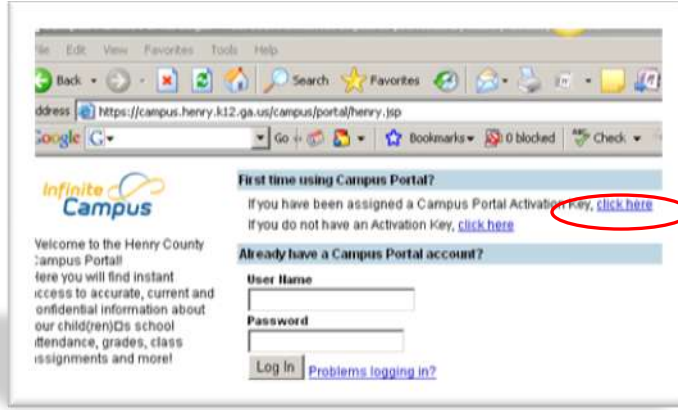
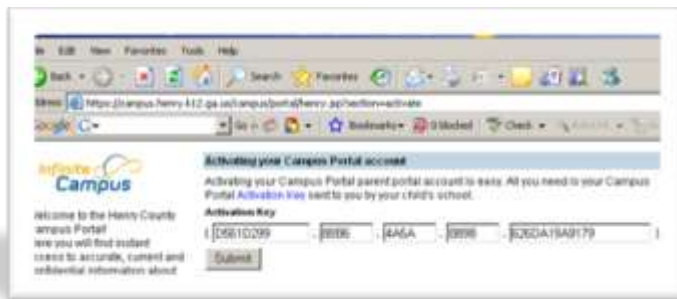


To set up an account in Campus Portal:

1. Before starting this process, be sure to have your provided Campus Portal activation key.
2. Go to: <http://www.henry.k12.ga.us/campusportal>
3. Under First Time Users of Campus Portal , choose the option for the activation key



4. Enter your activation code and click submit



5. Create a username and enter a password. You must re-enter the password to verify the password



6. After you have successfully created you account, you can click on the link provided to re-enter your new username and password

